



HPNA Newsletter

Hollywood Park Neighborhood Association, Inc.

January 2002

P.O. Box 22278, Sacramento, CA 95822

Vol. 1 No. 1

Light Rail is Coming to the Hollywood Park Neighborhood

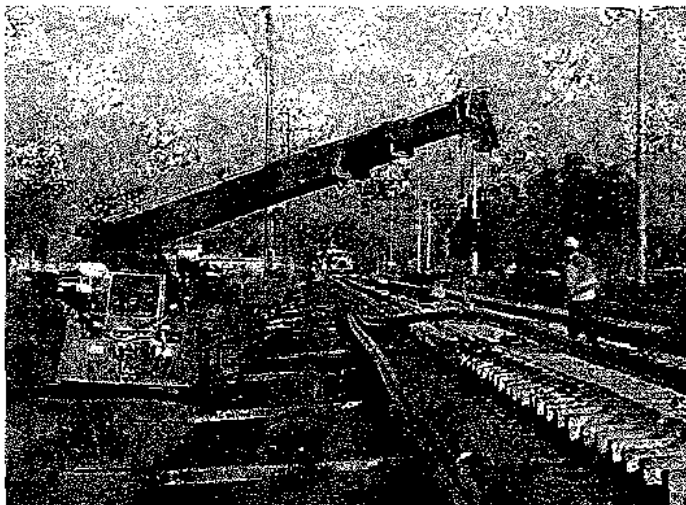


Photo Courtesy of Regional Transit

Light Rail Southern Line Scheduled to Open in the Fall of 2003

Light rail construction in our neighborhood seems to be complete, but that's only the rail line itself—and the sound barriers. Construction of the light rail stations will begin by this summer. Regional Transit (RT) builds the stations last in order to minimize the graffiti problem. And speaking of graffiti magnets, have you wondered about the color and designs on the sound barriers? RT chose them, with, they say, input from the community.

Once the stations are in place the trains should begin to roll. At this point the work is ahead of schedule, but some changes are being made in the Florin area that may slow things down again. Meanwhile, members of HPNA's Light Rail Access Project are monitoring developments and working with Regional transit to improve access to our stations. ✿

Light Rail Site Tour Friday, Jan. 11

The Light Rail Access Project (LRAP), as part of its efforts to improve the new light rail line, will sponsor a walk and ride tour of the area from the Fruitridge light rail site to the Sacramento City College light rail site by way of Fruitridge Road and 24th Street. The purpose of the tour is to point out possible light rail rider access problems and to discuss possible solutions. During the weeks following the Tour LRAP hopes to work with all the responsible parties to correct or eliminate problems.



One of the obstacles facing light rail riders

The tour is set for Friday, January 11, 2002, at 9:00a.m., and is expected to take approximately three hours.

The starting point is the parking lot of the closed Chief Auto Parts store on the corner of Fruitridge and 24th St. Anyone interested in participating should contact John Gomez, 208-7357. ✿

The Special Events Committee

The HPNA Special Events Committee will have charge of arranging social events, garage sales, and fund-raising activities for the Hollywood Park Neighborhood Association and its projects. This may involve picnics, grant applications, block parties, etc.

This committee has not begun its work and is seeking volunteers who would like to help plan special events. Contact HPNA at the mailing address. ✨

Youth/Recreation/School Committee

The Youth/Recreation/School Committee will put together projects and activities to involve school age children in organized and supervised activities taking place after normal school hours. The committee may also work with the schools in our neighborhood to improve school/community interaction.

This committee welcomes new volunteers. Please contact HPNA at the mailing address. ✨

Ruth's Pumpkin Muffins

The pumpkin muffins provided by Ruth Foote were a big hit at the last HPNA General Meeting. In fact, so many people asked for the recipe that we asked Ruth to share it with us. But . . .

Cramer's Bakery beat us to it! Ruth has given the recipe to the bakery and they plan to have pumpkin muffins made to Ruth's recipe available next fall. ✨

Dining Out in the Neighborhood

by Ruth Foote

We have all complained about the lack of good restaurants in the South area. What is it anyway? Why won't a Chili's or Outback Steak House locate near our area? And whatever happened to the little breakfast joints that use to be like home where everyone knows your name?

Why is it that even when a chain restaurant locates in the South area the service seems to be slower and the food doesn't seem to be the same quality? It seems that we are sandwiched in between the Arden area and Elk Grove, and God knows the traffic is not getting any better to those areas. One could starve to death just trying to get to a good meal on Howe

Avenue.

This column's intent is to hunt down the good, bad, and the ugly restaurants in the South area and particularly in the areas around Hollywood Park. I will make it my mission to keep you informed of wonderful new and old forgotten haunts that we want to become a part of our lives. Off we go. Wish me luck. ✨

What's in a Neighborhood?

The newsletter you are reading is the first edition of many (we hope!) and our goal is to provide information on a variety of topics that will be of current interest to *you*. And as we began planning this great enterprise, the first big question was: What should we write about? To focus this inquiry somewhat, this writer began thinking along the lines of the title of this article . . .

Houses. Every neighborhood has these, for certain, and is Hollywood Park any different? The answer may surprise you. We may have some heretofore undiscovered treasure, right here in this part of Sacramento, and we look forward to finding out!

Streets. Looking at the map, we see that Hollywood Park is roughly in the shape of a square that is bent to one side (a trapezoid, if you will). What do you think of our streets? Are they safe? Are they well marked? Where else can you stand at the corner of 22nd Avenue and 22nd Street? What about our drainage system? Is it adequate? Streets form an important part of our neighborhood.

Trees. We Sacramentans *love* our trees, and the residents of Hollywood Park are no exception, well, except when it comes to dealing with all those fallen leaves, perhaps. What about those leaf blowers? Do you have an opinion on this topic? (We have a feeling that the answer is in the affirmative.)

People. We saved the best for last, at least in this limited space. Hollywood Park reflects the diversity that is the hallmark of California, as we have residents of every imaginable age, race, culture, and, well, you name it and we probably have some! How would you like to meet a few?

Clearly, we have merely scratched the surface for possible subject matter in future editions. But again, we want to be of service to *you*. Is there something you would like to see addressed in print? Is there a topic that we should tell everyone about in Hollywood Park? Drop us a line at the P.O. box and let us know—we'd love to hear from you! ✨

--Jon Pederson

HPNA Light Rail Access Project is Monitoring Developments

The Light Rail Access Project (LRAP) is evaluating the ability of residents of the HPNA area to safely and conveniently access the planned light rail stations at Sacramento City College and at Fruitridge Road.

LRAP is working with the City of Sacramento, the City Council, Sac. City College, Regional Transit, and members of the communities to be served by the new light rail line to improve access, safety and convenience for light rail riders.

Their goal is to promote ridership on light rail, reduce smog and traffic congestion, and thereby improve the quality of life in the community as a whole. Wider participation is encouraged in shaping the light rail system to meet neighborhood needs and to promote the use of light rail.

The Light Rail Access Project is seeking suggestions from all the parties associated with light rail in our area, and is particularly concerned with participation from local residents. Please contact LRAP Chair, John Gomez, 208-7357, or HPNA, PO Box 22278, 95822-9998. ✨

January Election for the Hollywood Park Neighborhood Association Board



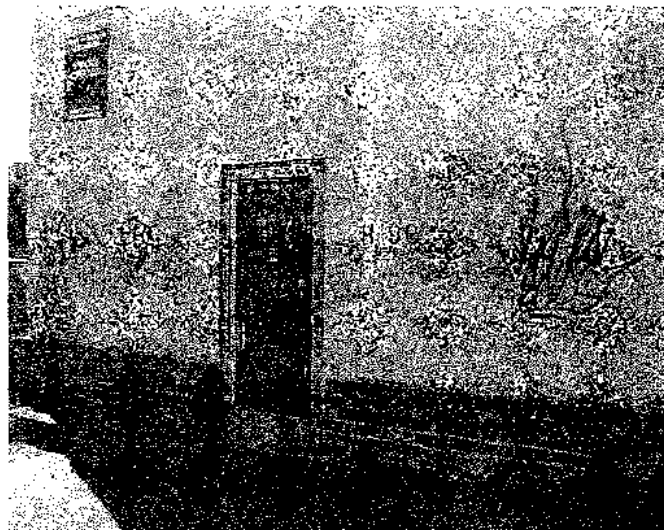
Everyone in the Hollywood Park area is invited to attend the January 16 General Meeting at Hollywood Park School Auditorium. Note that this is a change from past meetings that were held at DaVinci School. The meeting should start about 6:30 p.m. but people are advised to show up as early as 6:00 p.m. to become members of HPNA, meet their neighbors, and enjoy some refreshments.

Remember, only HPNA members can run for office and vote in the election, so come early and sign up.

The election of the first official HPNA Board members will be one of the first things on the agenda, but there will also be a report by representatives from the police department and a community update from City Councilperson, Lauren Hammond.

After months—years really—of behind-the-scenes hard work, the HPNA is finally going to become an official reality. All the paperwork has been filed and the fees paid. Now all that is left is the election of HPNA Board members.

When the January 16 election is over and the new Board members are installed the Steering Committee will cease to exist. Their work is complete. The new Board will assume all the duties and responsibilities that the Steering Committee has taken on. Existing subcommittees will continue their work. ✨



A potential committee project?

The Area Beautification Committee

The HPNA Area Beautification Committee will be exploring projects and activities that may include Christmas decorations for street lighting poles, cleanup on abandoned properties, planting in traffic circles and median strips, and providing volunteers to needy neighbors whose property might require work.

This committee has not begun work yet and is seeking volunteers who want to make the Hollywood Park area a more beautiful place. Please contact HPNA at the mailing address, or Irene Wilson, 455-1253 ✨



"NEWSLETTER" Seeks Name Name the Newsletter Contest

This issue of the HPNA newsletter is called "Newsletter" because we couldn't come up with a catchier name. "Newsletter" is certainly descriptive, it is a newsletter after all, but wouldn't it be nice if we had a newsletter with a memorable name? Something that reflects the distinctive nature of our community?

That's where you come in. We want you to help us find a great name for the newsletter. Bring your suggestions to the Jan. 16th meeting, or mail them to HPNA, PO Box 22278, Sac. CA 95822-9998. ✨

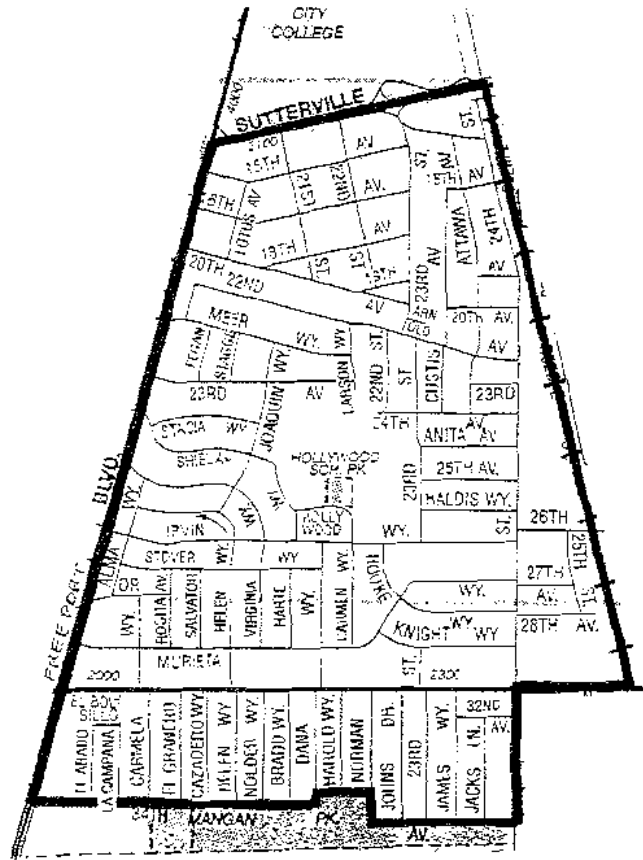
Talking to one another is loving one another.
African saying

Do You Live in the Hollywood Park Neighborhood Association Area?

The map at the right shows the boundaries of the new Hollywood Park Neighborhood Association.

The boundaries are: Freeport Blvd. on the west, Sutterville Road on the north, the railroad tracks on the east and the Executive Airport on the south.

Everyone who lives, owns property, or has a business within the area is eligible to join HPNA. Simply fill out the membership form below and either mail it in or bring it to the January 16 meeting. ✿



Acknowledgment

This first edition of the new HPNA newsletter is the work of: Sierra Campbell, Wanda Christensen, Sean O'Brien, Jon Pederson, John Reiger, and Cathy Rogala. Photos by Fred Foote and Regional Transit.

Service Contact Phone Numbers:

Lauren Hammond's office, 264-7005---Police non-emergency, 264-5471---Police/Fire/Medical Emergency, 911---Code Enforcement, 264-5948
Tree Services, 433-6345---Garbage/Recycling, 433-4800---Animal Services, 264-7387---City of Sacramento Area Contact, 277-2346
Traffic Investigator, 264-6721---Regional Transit (RT), 321-2877---Street Maintenance, 433-6336



Hollywood Park Neighborhood Association, Inc. (HPNA) Membership Form

Member(s) Name(s): _____

Address: _____

Fax: _____

Phone: _____ Email: _____

Dues are \$10 per calendar year per household.

Make check, or money order, out to: Hollywood Park Neighborhood Assoc. (or HPNA).

(Your check is your receipt.)

Mail to: P.O.B. 22278, Sacramento, 95822-9998

Membership is open to any person (or family) living, or owning a business, within the boundaries of the Hollywood Park Neighborhood Association (HPNA). Members are entitled to vote at HPNA meetings, become HPNA officers, and serve on HPNA committees. HPNA is a nonprofit corporation.

I am interested in being on the following committee(s):

- | | |
|--|--|
| Communications <input type="checkbox"/> | Special Events <input type="checkbox"/> |
| Youth/Rec./School <input type="checkbox"/> | Area Beautification <input type="checkbox"/> |
| Membership <input type="checkbox"/> | Safety/Crime Prevention <input type="checkbox"/> |
| Other interests: _____ | |

